

STREET LIGHT



SERIES KST

- ◆ High pressure diecast aluminium alloy housing from 60W to 240W. Anti-corrosion with electrophoresis process.
- ◆ Adopt multi-chips package 5050 LED source. Stable performance, low light failure and NO dead lights.
- ◆ The light transmittance of lens up to 98%. System luminous efficacy up to 170lm/w.
- ◆ Type III, Type IV, Type V, 150x70°, 145x100° optional. Uniform lighting distribution apply to different lighting projects.



Parameter	Value					
Model	KST1MD60W	KST1MD80W	KST2MD120W	KST2MD160W	KST3MD180W	KST3MD240W
Rate Power	60W	80W	120W	160W	180W	240W
Luminous Flux	>8,400lm	>11,200lm	>18,000lm	>22,400lm	>27,000lm	>33,600lm
Luminous Efficiency (150*70°, 145*100°)	150-160lm/w		160-170lm/w	150-160lm/w	160-170lm/w	150-160lm/w
Luminous Efficiency (Type III, IV, V)	140-150lm/w		150-160lm/w	140-150lm/w	150-160lm/w	140-150lm/w
Color Temperature	CCT 3000K/4000K/5000K/6000K					
Color Rendering Index	>70 Ra					
Input Voltage	AC 90-305 V/249-528V, 50/60Hz					
Power factor	≥ 0.95					
Beam Angle	150*70°, 145*100° / Type III, IV, V					
Work Temperature	-40°C to 85°C					
Work Life	>50,000 Hours					
IP Rating	IP65					
Net Weight	4.5 Kg	4.6 Kg	5.5 Kg	5.6 Kg	6.5 Kg	
Dimensions	494*310*84 mm		621*310*84 mm		769*320*93 mm	

STREET LIGHT



Driver Box

IP66 cabinet design with silicone ring, improving driver's service life.



Heat Sink

Fashionable housing design with great heat dissipation die cast aluminium.



Lens

Type III, Type IV, Type V, 150x70°
145x100° optional.



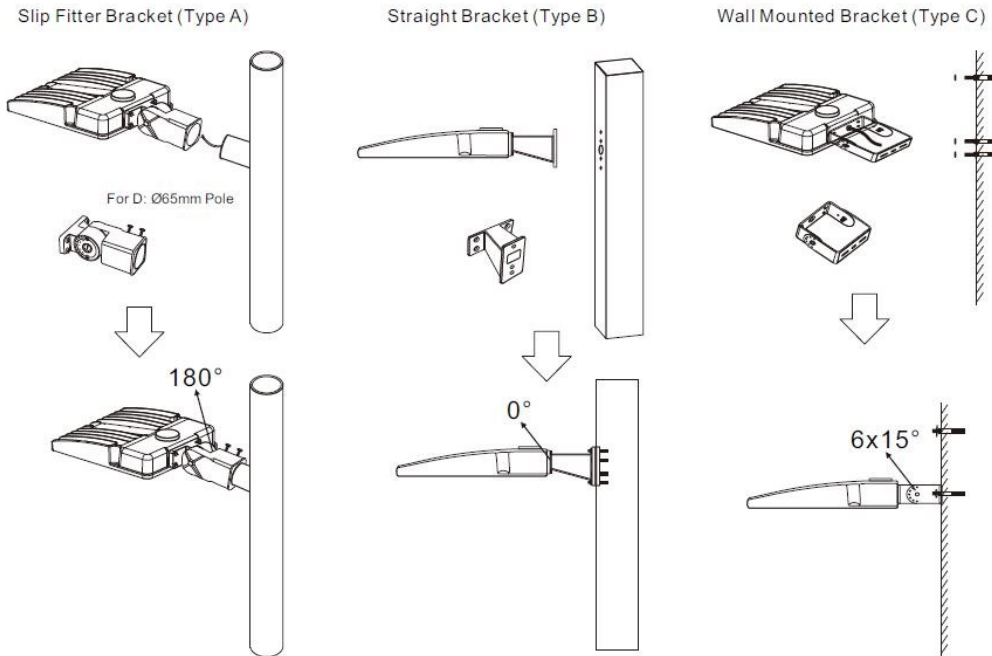
Smart Controller

Automatically turn on and off according to lux difference.

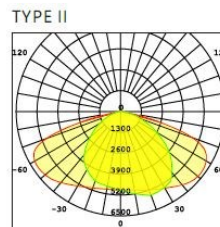
STREET LIGHT



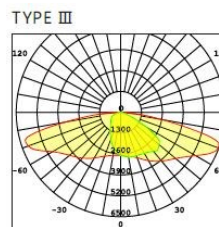
Installation



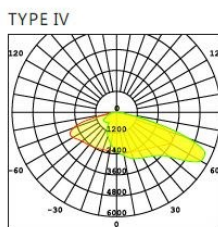
Light Distribution Curve



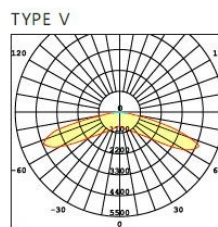
AVERAGE BEAM ANGLE (50%): 197.5 DEG
UNIT: cd —C0/180,149.9° —C90/270,62.9°



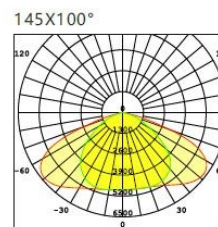
AVERAGE BEAM ANGLE (50%): 101.9 DEG
UNIT: cd —C0/180,168.0° —C90/270,81.3°



AVERAGE BEAM ANGLE (50%): 83.4 DEG
UNIT: cd —C0/180,153.7° —C90/270,65.9°



AVERAGE BEAM ANGLE (50%): 166.0 DEG
UNIT: cd —C0/180,166.8° —C90/270,164.1°



AVERAGE BEAM ANGLE (50%): 124.0 DEG
UNIT: cd —C0/180,143.4° —C90/270,97.2°